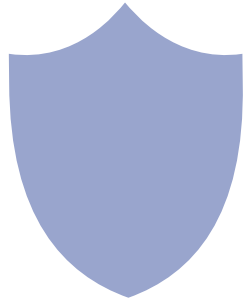
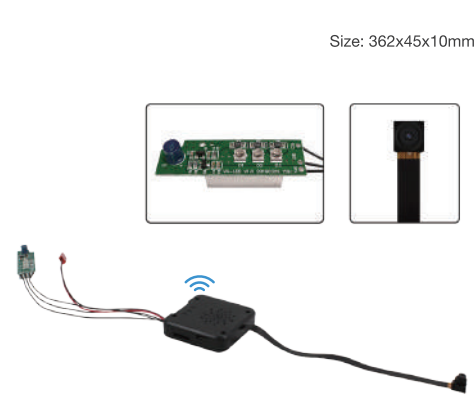


HD1080P Easy DIY Security Wi-Fi Camera Kit

User Manual
Version: April, 2021



Above Item Without Night Vision Board



Above Item With Night Vision Board

- Press icon on the right corner of camera -> WiFi Config -> Select local Wi-Fi (SSID) -> Input password -> Tap Next;
- Quit APP , wait 30 seconds (device restart automatically) and connected with set Wi-Fi(Wi-Fi indicator is solid);
- Enter APP to check live video locally or remotely anywhere.

P.S.: Contact local dealer for tutorial video setting up.

Overview:

This security Wi-Fi camera kit is equipped with a powerful 1080p smart pinhole Wi-Fi camera for live streaming video, and it comes with motion detection video recording and alarm.

Mini design and easy hidden to DIY any kinds of unique and exclusive security cameras for home & business surveillance.

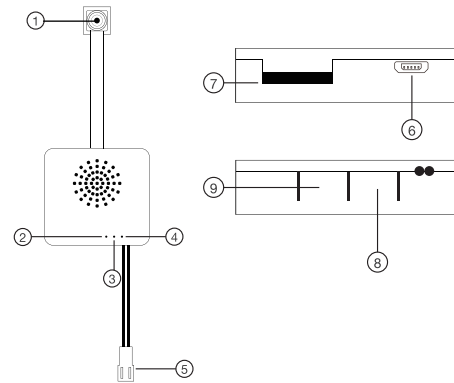
Usages: Nanny camera, home/ shop/ office/ warehouse surveillance camera.....

Warning : " illegal use is not allowed! Or, there will be consequences to bear! "

In the box:

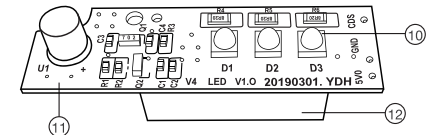
- 1 x Wi-Fi Camera Kit
- 1 x USB Cable
- 1 x Battery
- 1 x User Manual
- 1 x Micro SD Card Reader

Product structure:



Quick guide of Wi-Fi camera function:

- Download Free App <TinyCam Pro> from App Store or Google Play.
Tips:Please allow "TinyCam Pro" to access smartphone location while using the APP.
- Insert micro SD card --> Plug in Power adapter, wait for 1 minute (Power indicator and Wi-Fi indicator is flashing regularly);
- Enter smartphone settings --> Search and connect device's Wi-Fi named: AIS.....wait till phone status bar appear Wi-Fi symbol ;
- Enter APP, tap below "(+)" icon --> LAN search--> Tap the found device --> Tap Add --> Camera Online then;
Tips:This step = P2P mode, can check video locally when without Wi-Fi.



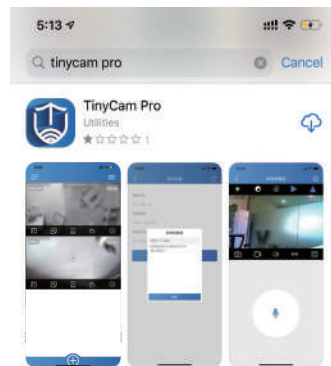
- | | |
|---|-----------------------|
| ① Camera | ⑦ Micro SD card slot |
| ② Charging indicator (Off when fully charged) | ⑧ ON/OFF key |
| ③ Power indicator | ⑨ Reset Key |
| ④ Wi-Fi indicator (Flash regularly=P2P mode, Solid=Wi-Fi connected) | ⑩ Night vision lights |
| ⑤ Port for Battery | ⑪ Photoresistance |
| ⑥ USB Port | ⑫ Cooling fin |

Wi-Fi Camera Connection Setting

Step1: Download and install APP

Scan below QR code or search and download free APP named <TinyCam Pro> in Apple APP store, Google play or Electronic market, and install it;

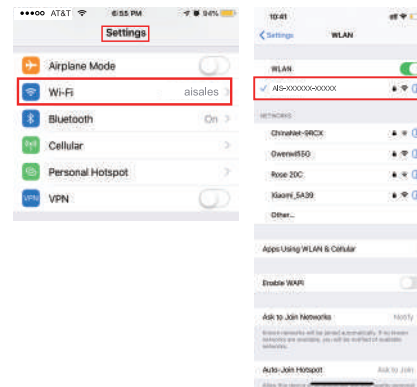
Tips: Please allow "TinyCam Pro" to access your location while you are using the app(for syncing local weather info).



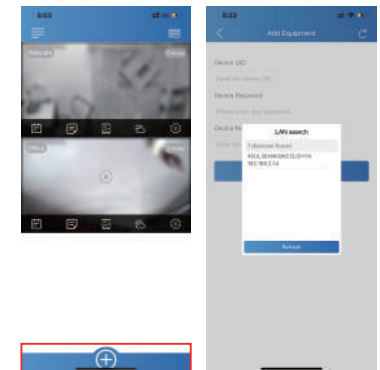
Step 2: Insert micro SD card --> Plug in devices with 5V2A power adapter --> Press back ON/OFF switch for 2 seconds , wait for 1 minute (Power indicator and Wi-Fi indicator is flashing regularly);

Step 3: Connect Wi-Fi

1. Open smartphone settings, search and connect the device's wireless signal named "AIS.....", wait Wi-Fi connected, and phone status bar appear Wi-Fi symbol.

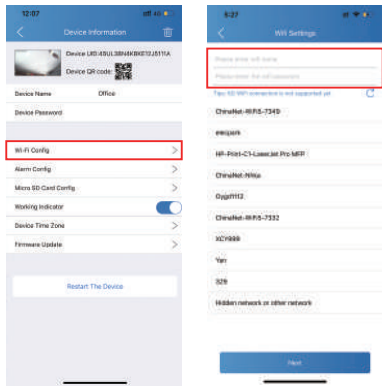


2. Enter APP, tap below "(+)" icon --> LAN search--> Tap the found device --> Tap Add --> Camera Online then;



Tips: This step = P2P mode, can check video locally when without Wi-Fi.

3. Tap icon on the right corner of camera → Wi-Fi Config → Select local Wi-Fi (SSID) → Input password → Tap Next;



11

4. Quit APP , wait 30 seconds (device restart automatically) and connected with set Wi-Fi (Wi-Fi indicator is solid) ;

5. Enter APP and check live video locally or remotely anywhere.

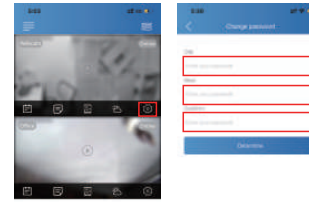


12

Set camera name and private code

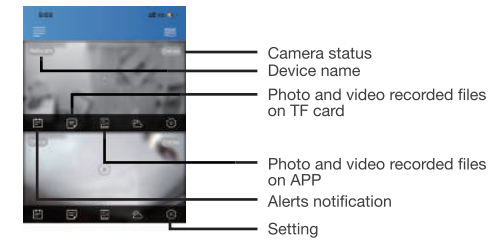
Set name: Tap the icon after the camera, Input a new name (like Office ...) in Device Name;

Set new password: Tap the icon after the camera, Tap Device Password → Old password = 888888.



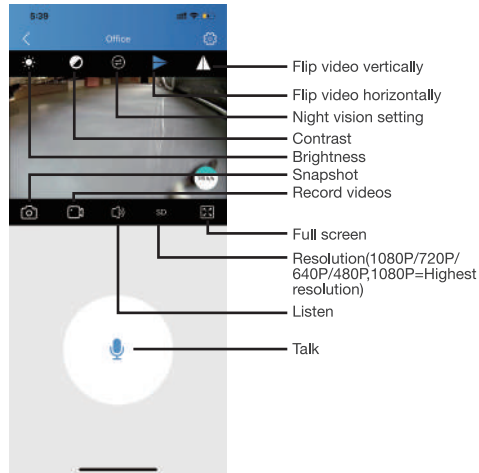
13

APP introduction:

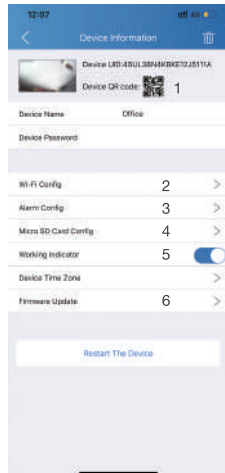


14

Tips: 1. Please confirm phone setting has allowed TinyCam Pro App to access the location services;
2. A TF card (Micro SD card) must be inserted for saving alerts pictures.



15



16

- 1 Share camera with others by QR code
- 2 Wi-Fi Config: Set camera to connect to local Wi-Fi
- 3 Alarm Config: Set motion detection sensitivity
- 4 Micro SD Card Record Config: Set SD card record mode / Resolution / File length...
- 5 Working Indicator: To turn on/off device's working led
- 6 Firmware Update: Update device's latest firmware by app

Specification

Resolution	1 Mega CMOS
Video pixel in phone	Max 1920*1080
Video pixel in card	1080*720
Frames	Max 25fps
Compressed format	H.264
View angle	120 Degree
Type of memory card	TF card >= Class 4/10 and HC marked
Maximum capacity of memory card	128GB
PC operation system	Windows 7, 8 / Mac OS X
Play software	VLCPPlayer/SMPlayer
Mobile phone operation system	Android/iOS
Web browser	IE7 and above, chrome, firefox
Power consumption	300MA/3.7V
Battery Capacity	Rechargeable 1500 mA
Recording	1 minute/ around 20MB
Working time in day time	Around 4-5 hours
Working time in night time	Around 2-3 hours
Charging time	3-4 hours
Power adapter	5V / 2A

17

FAQ

1. Q: Can't get device Wi-Fi signal?
A: Press reset key for 10 seconds and wait 1 minute.
2. Q: Live video not smooth and clear?
A: Select suitable resolution according to the real time network environment.
3. Q: Motion detect set and alarm?
A: 1). Set motion detect sensitivity in App Setting > Alarm Config;
2). When motion detected, camera will push an alarm message to your phone and take one picture for checking in the APP [Page 14 - Alert notification]. (A micro sd card MUST be inserted for saving alarm pictures)
4. Q: Micro SD card instruction?
A: 1). Format card before inserting;
2). Once device is connected to Wi-Fi, can set SD management in App Setting > Micro SD Card Config.

18

5. Q: How to play micro SD card video?

- A: 1). Use a card reader to read and play;
2). Use APP to play back [Page 14 - TF card recorded files];
3). Play back in good speed network.

6. Q: Forget camera password, or item goes abnormal?

- A: Turn on camera and wait for 1 minute, press reset key around 10 seconds till back indicators off to restore factory default. Camera restarts and get ready again in 1 minute.

7. Q: Any operation video demo of the camera for setting up?

- A: Please contact local dealer for video guide.



The end!